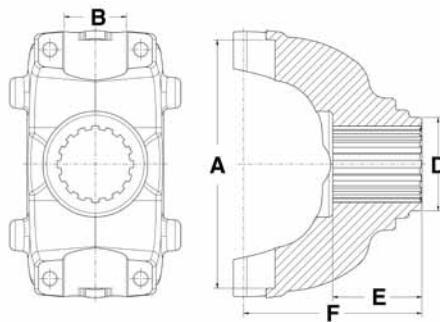




New Part Announcement

New 1710HR, 1760HR & 1810HR Series End Yokes

Splined End Yoke
BEARING STRAP CONSTRUCTION



Spline / No. Teeth	D Hub Dia.	Sleeve Dia.	E Length Thru Bore	F Centerline To End Of Hub	Joint Angle	Part No.
1710HR Series use Kit No. 6-0675 A-6.194 B-1.938 (Replaces Spicer® 5-675X)						
2.02-39	2.62	—	2.50	6.12	39.5	N6-4-9001-1X
2.02-39	2.75	—	2.00	5.00	33.5	N6-4-8331-1X
2.02-39	3.00	—	2.28	6.12	39.5	N6-4-8991-1X
2.11-32	3.00	—	2.25	4.56	24.0	N6-4-8681-1X
1760HR Series use Kit No. 6-0677 A-7.094 B-1.938 (Replaces Spicer® 5-677X)						
2.11-32	3.00	—	2.25	5.00	30.5	N6.3-4-1521-1X
2.27-44	3.00	—	2.50	5.25	30.0	N6.3-4-5221-1X
2.39-46	3.50	—	2.41	5.38	30.0	N6.3-4-1391-1X
2.79-54	—	—	2.75	5.62	—	N6.3-4-1681-1
1810HR Series use Kit No. 6-0676 A-7.643 B-1.938 (Replaces Spicer® 5-676X)						
2.27-44	2.94	—	2.50	5.25	30.0	N6.5-4-3281-1X
2.27-44	3.00	—	2.50	5.25	30.0	N6.5-4-4571-1X
2.79-54	—	—	2.75	5.62	—	N6.5-4-4631-1

NEAPCO Components, LLC 740 Queen St. Pottstown, PA 19464

Phone: 800-821-2374

E-mail: hd@neapco.com

Innovative Drivetrain Solutions™

Fax: 610-326-3857

Web site: www.neapco.com